

=
TESTING

?
CONSULTING

»
TRAINING

x
PRODUCTS

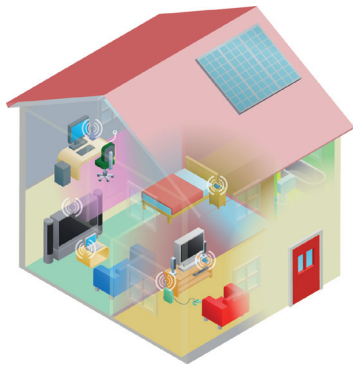
wifi services

Wi-Fi is getting a very strong momentum, just look at the uptake of Wi-Fi in smartphones, tablets and even TVs and other A/V equipment. This is creating great opportunities, but also big challenges. The industry is moving fast: new standards are being developed as we speak, new products and services are being rolled out at a high pace. But how do you keep control of this? Certification by the Wi-Fi Alliance is only a first step: you have to go way further, and Excentis will help you do this.

BENEFIT FROM OUR EXTENSIVE WI-FI EXPERIENCE, AND

- Reduce your R&D cost
- Enable faster deployment
- Improve service quality
- Enable better support and customer satisfaction
- Perform objective and reproducible measurements

ACCESS POINT VALIDATION IN REAL WORLD ENVIRONMENT



We have set up a unique test bed in a real home – a realistic, static, residential environment with controllable interference. This setting enables to statistically compare Wi-Fi access points, as the performance is measured from different physical locations in the home, with different client types (laptops, tablets, smartphones,...) and with different operating parameters.

PRODUCT TESTING

Our testing experts work with Wi-Fi products every day. Examples of testing areas that we cover:

- Physical level (MIMO, interference aspects with DOCSIS®, etc)
- MAC level functionality, security, community Wi-Fi etc
- Management, configuration and troubleshooting (SNMP, TR-069, HTTP, etc)
- Performance, stability and interoperability testing

TECHNOLOGY TRAINING

The Excentis Training Centre provides a broad range of introductory and advanced training programs. 'Wi-Fi Technology and Services' provides a thorough understanding of Wi-Fi networks and the issues that surround them. It explains current standards and technology aspects, as well as new market developments into the direction of community Wi-Fi services. Special attention is given to implementing Wi-Fi services over DOCSIS networks.

CONSULTING SERVICES

Count on our consultancy services in various domains: architecture design, test plan development, testing candidate or existing equipment, auditing, troubleshooting, etc.

WHY CHOOSE EXCENTIS?

- State-of-the-art test environment (anechoic chamber, real-world reference test environment, robot for automatic measurements, temperature chamber,...)
- Highly experienced test engineers with in-depth knowledge. Excentis is also the main contributor to the Wi-Fi specifications for European Cable Modem Gateways.
- Reliable partner with proven track record. As the official certification test lab for the European cable market we're best known for our thoroughness of testing Cable Modem, E-MTA, Set-Top Box, Gateway, Router and CMTS gear.
- Neutral and independent agency.
- Flexibility: we match your exact needs.

FIND OUT HOW YOU CAN BENEFIT

Contact us at wifi@excentis.com

ABOUT EXCENTIS

Excentis, headquartered in Ghent (Belgium), is a center of excellence for telecommunications, built on years' of expertise and experience with network technologies.

Our mission is to be the leading partner for highly specialized testing, consultancy and training for access network technologies (cable, xDSL, fiber, ...) and related services (data, VoIP and iDTV). Supplementary to this portfolio of services, we aim at developing high-quality, customizable test and monitoring solutions.

Our strongly held company values of integrity and vendor independence, combined with a well-equipped lab and proven expertise in IP, VoIP, SIP, Interactive Digital TV, network security, HFC networks, DOCSIS®, EuroDOCSIS™ and (Euro)PacketCable™ standards make Excentis the only competence center in Europe to which cable operators, telecom operators and service providers can turn for unbiased, technical support.